



Joe L. Davis

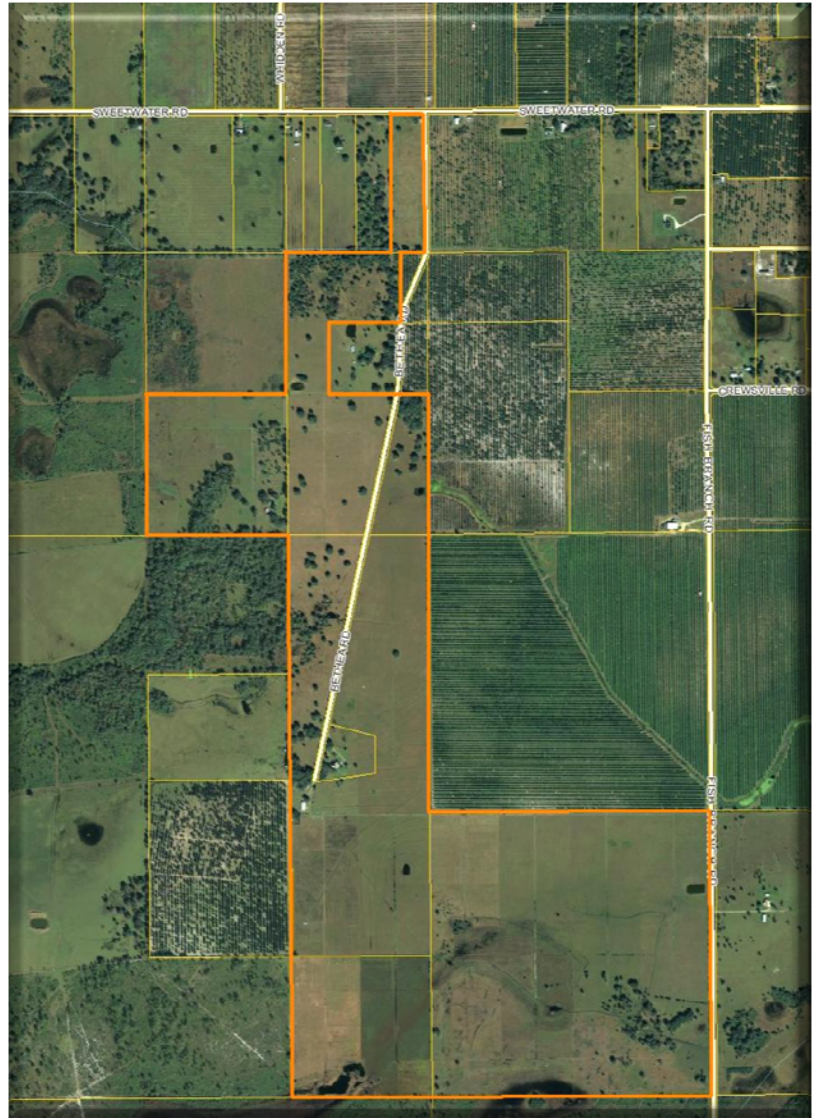
INC., REALTORS

432± ACRE COUNTRY ESTATE HARDEE COUNTY, FLORIDA

Approximately 430± acres of Oak Tree & Pine Tree filled ranch land, this estate is located in beautiful Hardee County. With a drive of approximately 1 hour and 30 minutes to Tampa or Orlando airports, the white beaches on the Gulf of Mexico, Tarpon fishing in Boca Grande, Bass fishing in Lake Okeechobee, and over one hundred championship golf courses.

Property boasts a comfortable 1983 two-story Tudor-style home, barn, cattle pens, and stocked fishing pond.

This property lends itself for a relaxing cattle ranch, with abundant wild life, if hunting peaks your interest.



FOR MORE INFORMATION, PLEASE CONTACT

**JOHN O'NEAL AT
JOE L. DAVIS, INC., REALTORS**

(863) 773-2128-OFFICE

(863) 381-2535-DIRECT

WWW.JOELDAVIS.COM

\$1,500,000.00!

This property offering and all facts and information contained herein are not guaranteed by JOE L. DAVIS, INC., Realtors, and we are not responsible for the accuracy thereof. Everything contained herein is subject to misstatements of facts and information, errors, omissions, prior sale, change in price without notice or withdrawal from market. Buyers shall rely entirely on their own information, judgment, and inspection of the property and records. JHO/jp (AC 853-0811)

"The Citrus and Acreage Specialists"

P.O. Box 1149 · 234 S. 6th Ave. (U.S. 17 South) · Wauchula, Florida 33873
Office (863) 773-2128 · Fax (863) 773-0011

**6933 BETHEA ROAD
ZOLFO SPRINGS, FLORIDA**

- 1983 Tudor style home
- 5,382± total square feet with 4,482± square feet living area
- Three septic tanks
- Two A/C units
- Exhaust fans in all bathrooms
- All baseboards, chair rails, door trims and doors are solid oak
- Andersen double-pane windows throughout home
- Large open foyer with tile floor, chandelier
- 2 car garage with new garage doors
- Utility room, washer and dryer included, tile floor
- Bathroom with tile floor, wallpapered walls, shower
- Office with carpet, wallpapered walls, ceiling fan, closets (could be bedroom)
- Family room with cathedral ceiling, ceiling fan, huge stone fireplace (chimney reaches 35 feet outside), carpeted, solid oak paneling, stained glass windows with safety glass on outside, 23 foot high ceiling
- Kitchen has vinyl floor, wallpapered walls, tile counter, space for small dining table and chairs, cooktop island with Jenn Air grill, custom cabinets, built in oven, ceiling fan, built in microwave
- Enclosed porch with concrete slab floor with tile, ceiling fan, french doors off kitchen, built in barbeque grill surrounded by stone
- Formal dining room with chandelier, carpet and wallpaper, bay window with custom drapes sewn by Mrs. Bennett
- Craft room (could be bedroom) with hardwood floor, wallpaper, ceiling fan
- Living room with carpet, wallpaper, carved antique wood fireplace (wood-burning) with marble insert from England
- Half bath off foyer with carpet, wallpaper, pedestal sink
- Carpeted stairs lead to open loft with oak railings and wallpapered walls
- Bedroom with carpet, wallpaper and ceiling fan
- Hall bathroom with tile floor and half-up tile walls, wallpaper and tub/shower
- Bedroom with carpet, wallpaper, ceiling fan
- Attached bathroom with tub/shower, vinyl floor, wallpaper, tile around tub
- Open, lit display case in hallway
- Christmas storage closet
- Master bedroom with antique wood fireplace (wood-burning), carpet, wallpaper, ceiling fan
- Attached bathroom with sunken tiled tub, carpet, double sink, shower stall, stained glass french doors, wallpaper, large walk-in closet with attic access and hot water heater storage
- Cedar lined hall closet in loft area
- Screened small porch