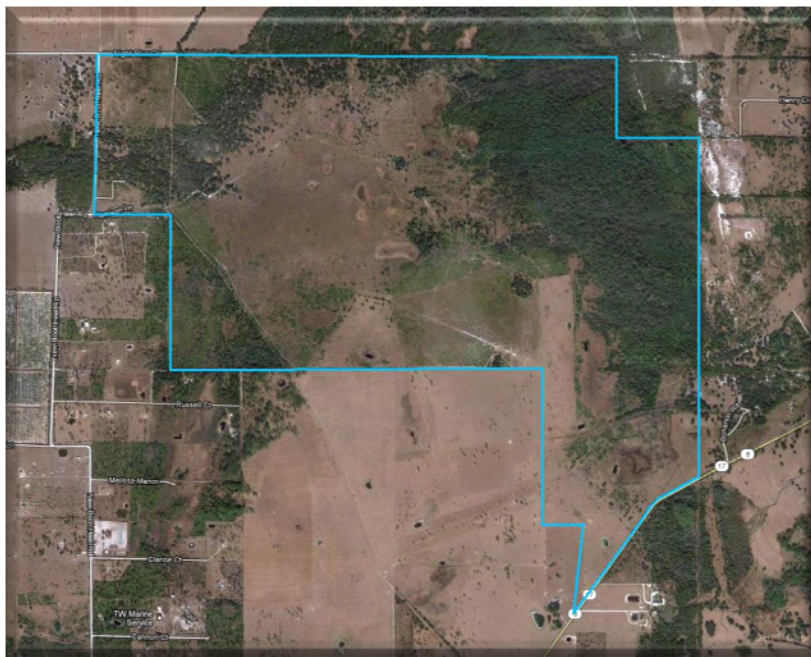


REAL ESTATE INVESTMENTS



**1,352± ACRES**  
**HIGHLANDS COUNTY, FLORIDA**



1,352.24± total acres

Approximately ¾ of a mile frontage on State Road 8 and one-half mile frontage on New  
Bootheel Road. Bootheel Creek meanders through the northeast corner.

***Asking: \$2,570,000.00!***

**FOR MORE INFORMATION, PLEASE CONTACT**

**JOE L. DAVIS, INC., REALTORS**

**(863) 773-2128 – OFFICE**

**(863) 443-0096 – JOE, JR**

**(863) 381-2535 – JOHN**

**(863) 781-0153 – KENNY**

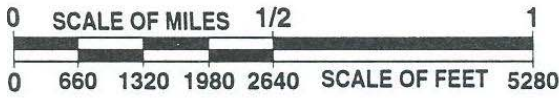
**(863) 448-2821 – JIMMY**

**[WWW.JOELDAVIS.COM](http://WWW.JOELDAVIS.COM)**

This property offering and all facts and information contained herein are not guaranteed by JOE L. DAVIS, INC., Realtors, and we are not responsible for the accuracy thereof. Everything contained herein is subject to misstatements of facts and information, errors, omissions, prior sale, change in price without notice or withdrawal from market. Buyers shall rely entirely on their own information, judgment, and inspection of the property and records. JJ-JHO-KS/jp (AC 829-2-0512)

**“The Citrus and Acreage Specialists”**

P.O. Box 1149 • 234 S. 6th Ave. (U.S. 17 South) • Wauchula, Florida 33873  
Office (863) 773-2128 • Fax (863) 773-0011



**TWP.39S-RNG.29E**  
**NORTHEAST QUADRANT**  
**HIGHLANDS COUNTY, FLORIDA**

TWP.38S-RNG.29E

SEE PAGE 94

TWP

